

VERTICAL DATUM & CONTOUR INTERVAL

ELEVATIONS SHOWN ON THIS DRAWING ARE BASED ON THE NORTH AMERICAN VERTICAL DATUM OF 1988 (NAVD88) AND WERE ESTABLISHED USING RTK GPS.

2.0' CONTOUR INTERVAL - THE EXPECTED VERTICAL ACCURACY IS EQUAL TO 1/2 THE CONTOUR INTERVAL OR ± 1.0' FOR THIS PROJECT.

LEGAL DESCRIPTION

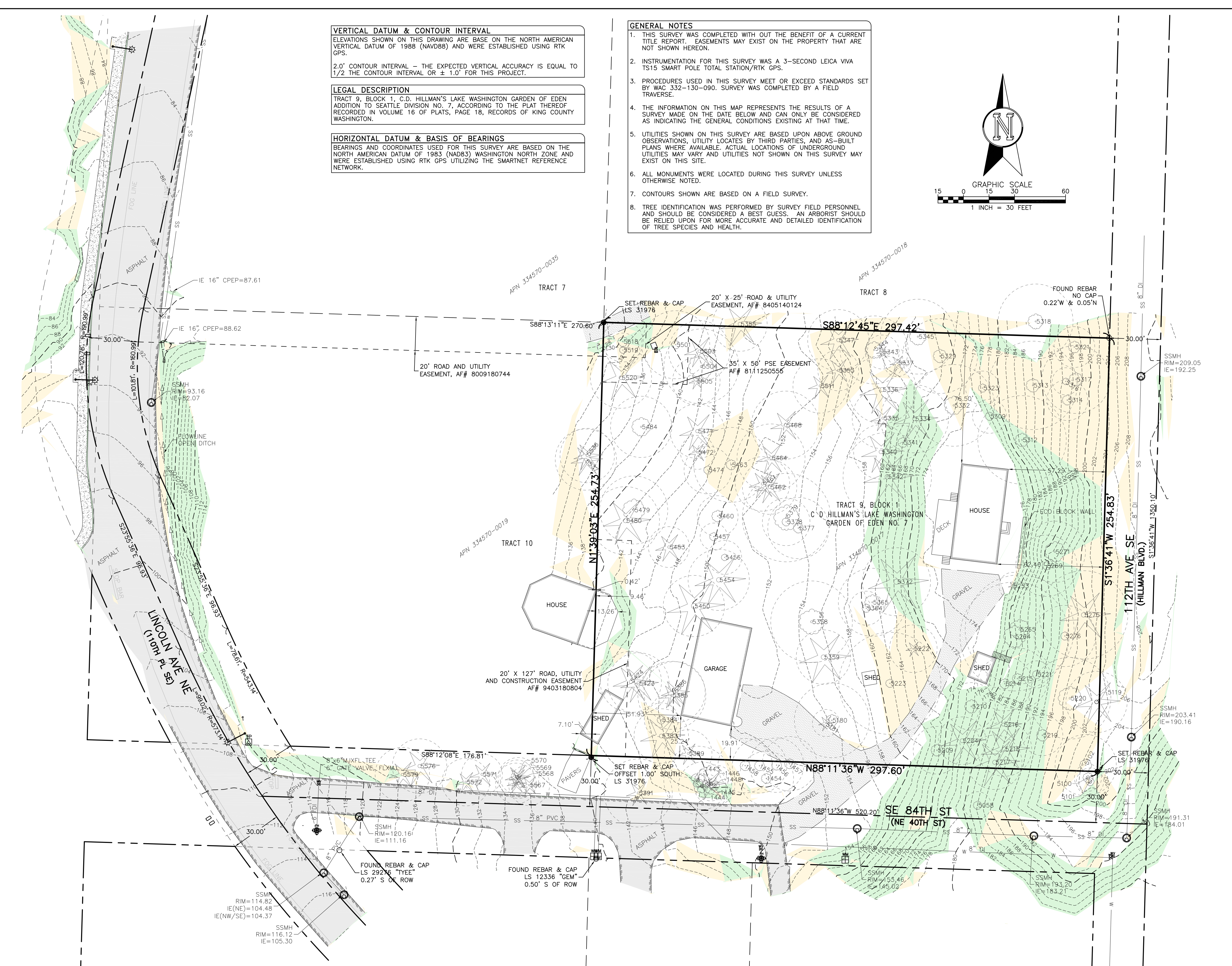
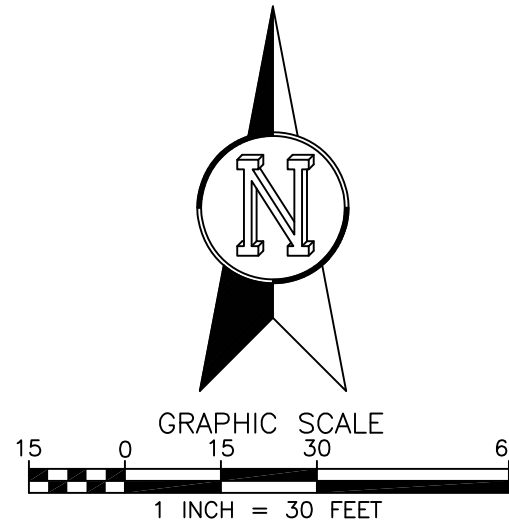
TRACT 9, BLOCK 1, C.D. HILLMAN'S LAKE WASHINGTON GARDEN OF EDEN ADDITION TO SEATTLE DIVISION NO. 7, ACCORDING TO THE PLAT THEREOF RECORDED IN VOLUME 16 OF PLATS, PAGE 18, RECORDS OF KING COUNTY WASHINGTON.

HORIZONTAL DATUM & BASIS OF BEARINGS

BEARINGS AND COORDINATES USED FOR THIS SURVEY ARE BASED ON THE NORTH AMERICAN DATUM OF 1983 (NAD83) WASHINGTON NORTH ZONE AND WERE ESTABLISHED USING RTK GPS UTILIZING THE SMARTNET REFERENCE NETWORK.

GENERAL NOTES

1. THIS SURVEY WAS CONDUCTED WITH OUT THE BENEFIT OF A CURRENT TITLE REPORT. EASEMENTS MAY EXIST ON THE PROPERTY THAT ARE NOT SHOWN HEREON.
2. INSTRUMENTATION FOR THIS SURVEY WAS A 3-SECOND LEICA VIVA TS15 SMART POLE TOTAL STATION/RTK GPS.
3. PROCEDURES USED IN THIS SURVEY MEET OR EXCEED STANDARDS SET BY WAC 332-130-090. SURVEY WAS COMPLETED BY A FIELD TRAVERSE.
4. THE INFORMATION ON THIS MAP REPRESENTS THE RESULTS OF A SURVEY MADE ON THE DATE BELOW AND CAN ONLY BE CONSIDERED AS INDICATING THE GENERAL CONDITIONS EXISTING AT THAT TIME.
5. UTILITIES SHOWN ON THIS SURVEY ARE BASED UPON ABOVE GROUND OBSERVATIONS, UTILITY LOCATES BY THIRD PARTIES, AND AS-BUILT PLANS WHERE AVAILABLE. ACTUAL LOCATIONS OF UNDERGROUND UTILITIES MAY VARY AND UTILITIES NOT SHOWN ON THIS SURVEY MAY EXIST ON THIS SITE.
6. ALL MONUMENTS WERE LOCATED DURING THIS SURVEY UNLESS OTHERWISE NOTED.
7. CONTOURS SHOWN ARE BASED ON A FIELD SURVEY.
8. TREE IDENTIFICATION WAS PERFORMED BY SURVEY FIELD PERSONNEL AND SHOULD BE CONSIDERED A BEST GUESS. AN ARBORIST SHOULD BE RELIED UPON FOR MORE ACCURATE AND DETAILED IDENTIFICATION OF TREE SPECIES AND HEALTH.



SVY POINT#	DBH (IN.)	SPECIES	DLR (FT.)
1443	6"	BIG LEAF MAPLE	20'
1444	8"	PACIFIC MADRONE	14'
1445	8"	DOUG FIR	6'
1446	18"	DOUG FIR	10'
1448	12"	PACIFIC MADRONE	12'
1454	12"	BIG LEAF MAPLE	16'
1455	12"	BIG LEAF MAPLE	16'
1456	12"	BIG LEAF MAPLE	16'
1457	12"	BIG LEAF MAPLE	16'
1458	12"	BIG LEAF MAPLE	16'
5058	8"	BIG LEAF MAPLE	8'
5100	12"	BIG LEAF MAPLE	8'
5101	10"	BIG LEAF MAPLE	8'
5102	14"	BIG LEAF MAPLE	18'
5119	28"	DOUG FIR	18'
5180	14"	BIG LEAF MAPLE	22'
5181	10"	WESTERN RED CEDAR	8'
5204	28"	WESTERN RED CEDAR	14'
5209	14"	BIG LEAF MAPLE	14'
5210	16"	BIG LEAF MAPLE	14'
5214	12"	BIG LEAF MAPLE	16'
5215	12"	BIG LEAF MAPLE	18'
5216	22"	DOUG FIR	16'
5217	30"	WESTERN RED CEDAR	16'
5218	30"	WESTERN RED CEDAR	16'
5219	14"	BIG LEAF MAPLE	12'
5220	28"	BIG LEAF MAPLE	24'
5221	10"	BIG LEAF MAPLE	8'
5222	10"	WESTERN RED CEDAR	14'
5223	14"	BIG LEAF MAPLE	30'

SVY POINT#	DBH (IN.)	SPECIES	DLR (FT.)
5355	26"	WESTERN RED CEDAR	16'
5358	30"	BIG LEAF MAPLE	24'
5359	32"	DOUG FIR	16'
5364	10"	BIG LEAF MAPLE	10'
5365	18"	BIG LEAF MAPLE	20'
5372	38"	DOUG FIR	20'
5377	12"	RED ALDER	18'
5378	10"	RED ALDER	14'
5379	30"	BIG LEAF MAPLE	26'
5383	28"	WESTERN RED CEDAR	16'
5384	10"	RED ALDER	10'
5385	16"	WESTERN RED CEDAR	20'
5386	18"	WESTERN RED CEDAR	18'
5389	14"	DOUG FIR	14'
5391	16"	DOUG FIR	20'
5423	24"	WESTERN RED CEDAR	18'
5424	24"	WESTERN RED CEDAR	18'
5450	36"	DOUG FIR	18'
5453	18"	WESTERN RED CEDAR	12'
5454	32"	WESTERN RED CEDAR	18'
5456	8"	RED ALDER	10'
5457	10"	BIG LEAF MAPLE	8'
5460	14"	BIG LEAF MAPLE	12'
5461	18"	WESTERN RED CEDAR	16'
5462	20"	WESTERN RED CEDAR	16'
5463	12"	BIG LEAF MAPLE	22'
5464	20"	DOUG FIR	20'
5468	20"	DOUG FIR	20'
5471	24"	DOUG FIR	16'
5472	12"	DOUG FIR	10'

SVY POINT#	DBH (IN.)	SPECIES	DLR (FT.)
5253	6"	WESTERN RED CEDAR	8'
5264	26"	BIG LEAF MAPLE	32'
5265	24"	BIG LEAF MAPLE	32'
5269	10"	BIG LEAF MAPLE	18'
5271	24"	BIG LEAF MAPLE	18'
5275	32"	DOUG FIR	26'
5276	10"	BIG LEAF MAPLE	18'
5309	10"	BIG LEAF MAPLE	10'
5312	16"	BIG LEAF MAPLE	26'
5313	16"	BIG LEAF MAPLE	26'
5314	12"	BIG LEAF MAPLE	12'
5316	8"	BIG LEAF MAPLE	8'
5317	16"	BIG LEAF MAPLE	20'
5318	18"	BIG LEAF MAPLE	22'
5321	14"	BIG LEAF MAPLE	12'
5323	10"	BIG LEAF MAPLE	10'
5329	16"	BIG LEAF MAPLE	22'
5332	22"	BIG LEAF MAPLE	24'
5334	28"	DOUG FIR	20'
5335	16"	DOUG FIR	18'
5336	30"	DOUG FIR	20'
5337	10"	DOUG FIR	8'
5340	26"	DOUG FIR	16'
5341	12"	BIG LEAF MAPLE	10'
5342	32"	DOUG FIR	26'
5343	8"	WESTERN RED CEDAR	10'
5344	20"	BIG LEAF MAPLE	20'
5345	20"	BIG LEAF MAPLE	22'
5347	24"	DOUG FIR	18'
5353	16"	DOUG FIR	12'

SVY POINT#	DBH (IN.)	SPECIES	DLR (FT.)
5474	10"	BIG LEAF MAPLE	14'
5479	26"	BIG LEAF MAPLE	20'
5480	30"	DOUG FIR	20'
5484	22"	BIG LEAF MAPLE	18'
5501	10"	BIG LEAF MAPLE	20'
5503	20"	DOUG FIR	18'
5504	30"	BIG LEAF MAPLE	22'
5505	10"	WESTERN RED CEDAR	14'
5511	16"	DOUG FIR	16'
5518	12"	RED ALDER	12'
5519	8"	RED ALDER	10'
5520	28"	WESTERN RED CEDAR	18'
5536	18"	WESTERN RED CEDAR	16'
5537	20"	WESTERN RED CEDAR	18'
5567	12"	DOUG FIR	12'
5568	12"	DOUG FIR	12'
5569	12"	DOUG FIR	12'
5570	16"	DOUG FIR	10'
5571	16"	DOUG FIR	12'
5572	14"	DOUG FIR	14'
5576	24"	DOUG FIR	16'
5579	18"	DOUG FIR	16'

PROJECT INFORMATION
 SURVEYOR: PLOG REAL ESTATE AND CONSULTING, LLC
 22525 SE 64TH PL, STE 2274
 ISSAQUAH, WA 98027
 PH.: (206) 420-7130
 PROPERTY OWNER: BOSHA GROUP
 13410 HWY 99 S, STE 201
 EVERETT, WA 98204
 TAX PARCEL NUMBER: 334570-0017
 PROJECT ADDRESS: 8314 110TH PL SE
 RENTON, WA 98056
 PARCEL AREA: 75,800 S.F. (1.740 ACRES ±)
 AS SURVEYED



PLOG
 REAL ESTATE AND CONSULTING
 Surveying - Engineering - Real Estate

22525 SE 64th Place
 Suite 2274
 Issaquah, WA 98027
 (206) 420-7130
 plogrealestate.com
 NW1/4, NE1/4, SEC 32, TWP 24N, RNG 05E, W.M.
BOUNDARY & TOPOGRAPHIC SURVEY
 BOSHA GROUP
 8314 110TH PL SE, RENTON, WA 98056
 PROJECT NO.: 016-18 REVISION DATE: 03/14/2018 REVISION NO.: 0 SHEET: 1 OF 1